

Specifications

Structure

- ✓ Earth Quake code compliant with building design to highest codal provisions for this zone.

Flooring

- ✓ Living/Dinning : Vitrified Tiles.
- ✓ Bedrooms: Laminated Wooden Flooring.
- ✓ Balconies : Antiskid ceramic tiles.
- ✓ Common areas and staircase : Marble & tiles.

Walls/Ceiling

- ✓ External : Excel weather proof.
- ✓ Internal : Plastic emulsion.
- ✓ Ceiling : Designer POP.

Kitchen

- ✓ Flooring : Vitrified Tiles.
- ✓ Wall Finishes : Ceramic tiles up to 2ft height above counter area.
- ✓ Kitchen Counter : Granite counters with stainless steel sink.
- ✓ Cabinets : Modular Kitchen.

Windows | Doors | Wardrobes

- ✓ Wooden Doors of standard quality.
- ✓ Seasoned wooden windows of standard quality.
- ✓ Textured Mica best quality for wardrobes.

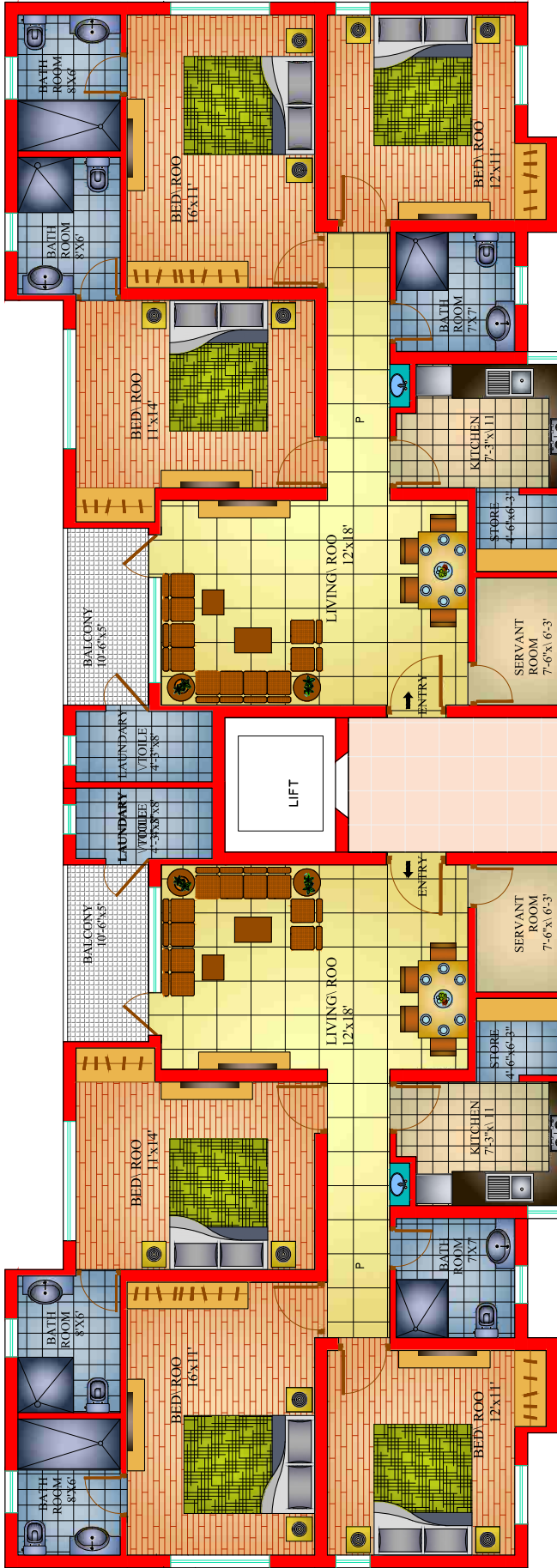
Toilet

- ✓ Walls: Ceramic tiles full wall.
- ✓ Flooring : Antiskid Ceramic tiles.
- ✓ Fittings : EWC & Wash Basin in white color, pipe line for geysers.
- ✓ Mirror over Wash Basin, towel rail / ring.

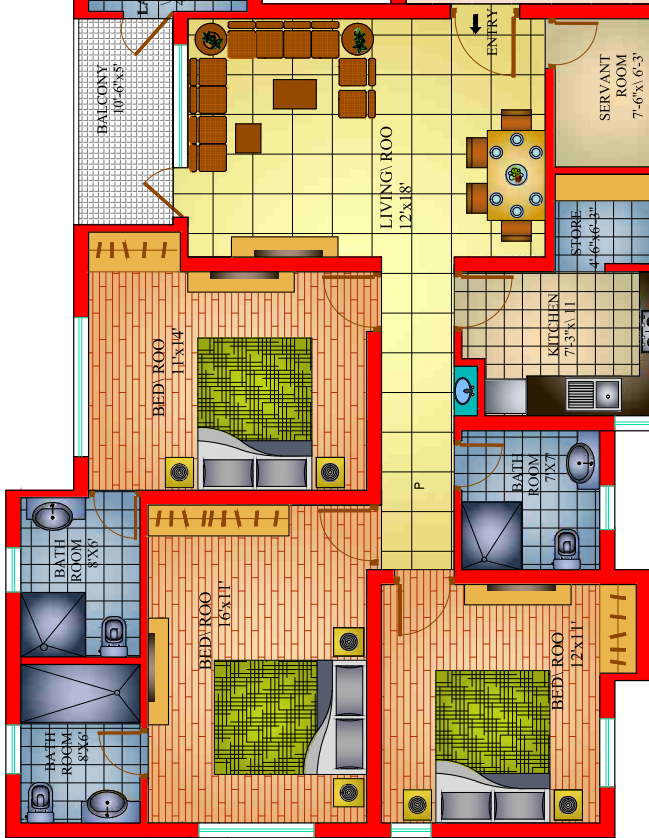
Electrical

- ✓ All standard electric fittings which includes electric switches.
- ✓ 24x7 and 100% power backup for common areas and facilities.

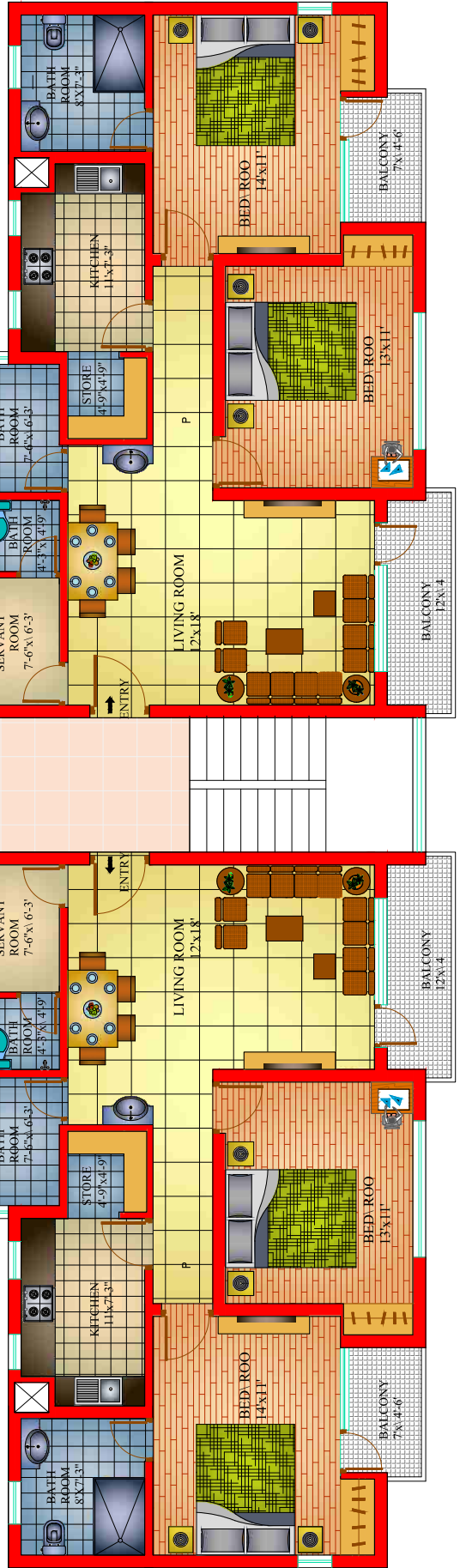
3 BHK



3 BHK



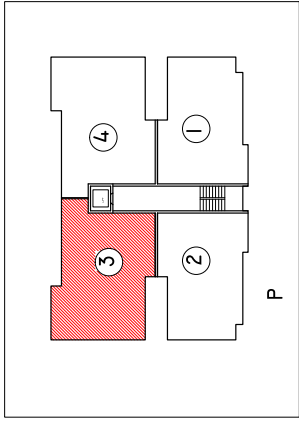
2 BHK



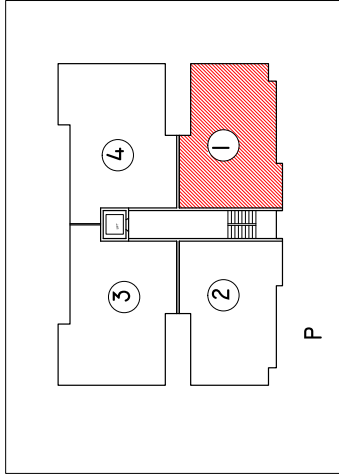
2 BHK



Floor Plan



3 BHK



2 BHK